

5 Port Air Operated Valve SYA3000/5000/7000 Series

How to Order

A, B port size

Thread piping

Symbol	Port size	Applicable series
M5	M5 x 0.8	SYA3000
01	1/8	SYA5000
02	1/4	SYA7000

One-touch fitting (Metric size)

Symbol	Port size	Applicable series
C4	One-touch fitting for Ø 4	SYA3000
C6	One-touch fitting for Ø 6	SYA3000
C4	One-touch fitting for Ø 4	SYA5000
C6	One-touch fitting for Ø 6	SYA5000
C8	One-touch fitting for Ø 8	SYA5000
C8	One-touch fitting for Ø 8	SYA7000
C10	One-touch fitting for Ø 10	SYA7000

One-touch fitting (Inch size)

Symbol	Port size	Applicable series
N3	One-touch fitting for Ø 5/32"	SYA3000
N7	One-touch fitting for Ø 1/4"	SYA3000
N3	One-touch fitting for Ø 5/32"	SYA5000
N7	One-touch fitting for Ø 1/4"	SYA5000
N9	One-touch fitting for Ø 5/16"	SYA5000
N9	One-touch fitting for Ø 5/16"	SYA7000
N11	One-touch fitting for Ø 3/8"	SYA7000

Thread type

—	Rc
F	G
N	NPT
T	NPTF

* Except for M5

Bracket

—	Without bracket
F1	With foot bracket (2 position single only)
F2	With side bracket

Series

3	SYA3000
5	SYA5000
7	SYA7000

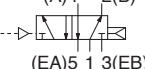
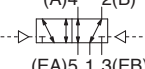
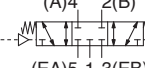
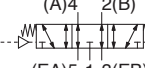
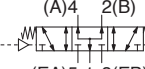
Body ported SYA 5 1 20 - C6 [] - []

Base mounted SYA 5 1 40 - [] []

Series

3	SYA3000
5	SYA5000
7	SYA7000

Type of actuation

1	2 position single (A)4 2(B)  (EA)5 1 3(EB) (P)
2	2 position double (A)4 2(B)  (EA)5 1 3(EB) (P)
3	3 position closed centre (A)4 2(B)  (EA)5 1 3(EB) (P)
4	3 position exhaust centre (A)4 2(B)  (EA)5 1 3(EB) (P)
5	3 position pressure centre (A)4 2(B)  (EA)5 1 3(EB) (P)

P, R port thread type

—	Rc
F	G
N	NPT
T	NPTF

Port size

Symbol	Port size	Applicable series
—	Without sub-plate	
01	1/8 With sub-plate	SYA3000
02	1/4 With sub-plate	SYA5000
02	1/4 With sub-plate	SYA7000
03	3/8 With sub-plate	

* Refer to the SY series operation manual for the sub-plate part number when only the sub-plate is required.

Serie SYA3000/5000/7000



EMC-SYA-01A-UK

SYA3000/5000/7000 Series

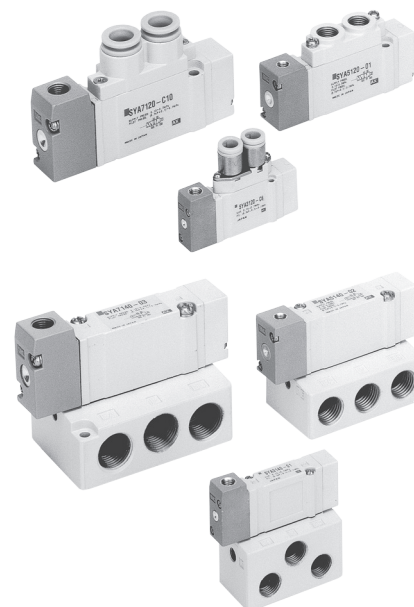
Specifications

Fluid		Air
Operating pressure range MPa	2 position single	0.15 to 0.7
	2 position double	-100 kPa to 0.7
	3 position	-100 kPa to 0.7
Pilot pressure range ^{Note 1)} MPa	2 position single	(0.7 x P + 0.1) to 0.7 P: Operating pressure range
	2 position double	0.1 to 0.7
	3 position	0.2 to 0.7
Ambient and fluid temperature (°C)		-10 to 60 (No freezing.)
Manual override (Manual operation)		Non-locking push type
Lubrication		Not required
Mounting orientation		Unrestricted
Impact/Vibration resistance (m/s ²) ^{Note 2)}		150/30

Note 1) In case of single type, be certain that pressure within operating pressure range be supplied to supply port, because return pressure is introduced from supply port {1(P)} for activation.

Note 2) Impact resistance: No malfunction resulted from the impact test using a drop impact tester. The test was performed on the axis and right angle directions of the main valve and armature, when pilot signal is ON and OFF. (Value in the initial state)

Vibration resistance: No malfunction occurred in one sweep test between 45 and 2000 Hz. Test was performed to axis and right angle directions of the main valve and armature when pilot signal is ON and OFF. (Value in the initial state)



⚠ Caution

**Be sure to read this before handling the products.
Refer to page 8 for safety instructions and pages 9 to 15 for 3/4/5 port solenoid valve precautions.**

How to Order Manifold Base

Same manifolds as SY series (Non plug-in type) are prepared.
(For 20, 41, 42 and 45 Types)

SS5YA³₅-³₇ Fill the same as **SS5Y³₅-³₇**.
(Refer to the [Web Catalogue](#).)

* Specify the part numbers for valves and options together beneath the manifold base part number.

<Example>

- SS5YA5-42-03-02** 1 set (Type 42, 3 station manifold base part no.)
- * SYA5140 1 set (Single air operated valve part no.)
- * SYA5240 1 set (Double air operated valve part no.)
- * SY5000-26-20A 1 set (Blanking plate assembly part no.)

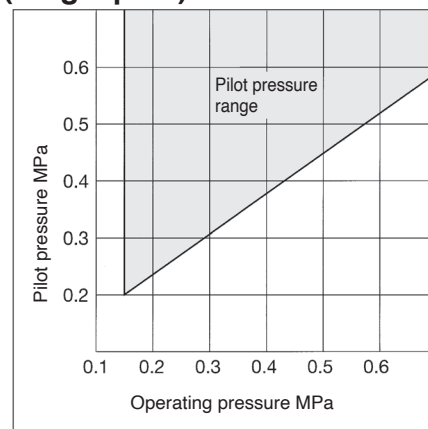
↳ The asterisk denotes the symbol for assembly.

Prefix it to the part nos. of the solenoid valve, etc.

Note) When single body ported air operated valves are ordered, manifold mounting screws and gaskets are not included. Order them separately if necessary.

(For details, refer to the [Web Catalogue](#).)

Pilot Pressure Range (Single pilot)



Flow Rate Characteristics/Weight

Model/SYA3□20 Series (Body ported)

Valve model	Type of actuation		Pilot port size	Port size		Flow rate characteristics								Weight (g)			
						1 → 4/2 (P → A/B)				4/2 → 5/3 (A/B → EA/EB)							
						C [dm ³ /(s·bar)]	b	Cv	Q[l/min(ANR)]*	C [dm ³ /(s·bar)]	b	Cv	Q[l/min(ANR)]*				
SYA3□20-M5	2 position	Single	M5	M5	M5	0.61	0.44	0.16	171	0.64	0.45	0.18	181	35			
		Double				0.48	0.46	0.13	137	0.47	0.43	0.13	131	37			
	3 position	Closed centre				0.47	0.42	0.13	130	0.47 (0.44)	0.41 (0.37)	0.13 (0.12)	129 (117)	39			
		Exhaust centre				0.50 (0.41)	0.48 (0.35)	0.15 (0.11)	145 (108)	0.47	0.43	0.13	131				
SYA3□20-C4	2 position	Single				M5	M5	C4 (One-touch fitting for Ø 4)	0.72	0.29	0.18	182	0.64	0.34	0.17	167	44
		Double							0.59	0.28	0.15	148	0.59	0.30	0.15	150	46
	3 position	Closed centre							0.63	0.35	0.16	166	0.42 (0.41)	0.34 (0.37)	0.11 (0.11)	110 (109)	48
		Exhaust centre							0.76 (0.46)	0.42 (0.34)	0.21 (0.12)	210 (120)	0.59	0.29	0.15	149	
SYA3□20-C6	2 position	Single	M5	M5	C6 (One-touch fitting for Ø 6)				0.76	0.30	0.19	193	0.65	0.39	0.17	176	40
		Double							0.76	0.55	0.24	233	0.60	0.33	0.16	156	42
	3 position	Closed centre							0.65	0.32	0.16	167	0.64(0.42)	0.31 (0.36)	0.17 (0.11)	164 (111)	44
		Exhaust centre							0.77 (0.49)	0.34 (0.43)	0.21 (0.15)	201 (136)	0.61	0.34	0.16	159	
3 position	Pressure centre																
	Pressure centre																

Note) [] : denotes normal position.

* These values have been calculated according to ISO6358 and indicate the flow rate under standard conditions with an inlet pressure of 0.6 MPa (relative pressure) and a pressure drop of 0.1 MPa.

Model/SYA3□40 Series (Base mounted)

Valve model	Type of actuation		Pilot port size	Port size	Flow rate characteristics ^{Note 1)}								Weight ^{Note 2)} (g)
					1 → 4/2 (P → A/B)				4/2 → 5/3 (A/B → EA/EB)				
					C [dm ³ /(s·bar)]	b	Cv	Q[l/min(ANR)]*	C [dm ³ /(s·bar)]	b	Cv	Q[l/min(ANR)]*	
SYA3□40-01□	2 position	Single	M5	1/8	1.0	0.30	0.24	254	1.1	0.30	0.26	280	69 (34)
		Double			0.77	0.28	0.18	193	0.85	0.30	0.19	216	71 (36)
	3 position	Closed centre			0.73	0.31	0.18	187	1.1 (0.55)	0.26 (0.52)	0.24 (0.16)	273 (164)	73 (38)
		Exhaust centre			1.2 (0.51)	0.24 (0.45)	0.29 (0.14)	294 (144)	0.89	0.47	0.24	255	
3 position	Pressure centre												
	Pressure centre												

Note 1) [] : denotes normal position.

Note 2) (): Without sub-plate.

* These values have been calculated according to ISO6358 and indicate the flow rate under standard conditions with an inlet pressure of 0.6 MPa (relative pressure) and a pressure drop of 0.1 MPa.

SYA3000/5000/7000 Series

Flow Rate Characteristics/Weight

Model/SYA5□20 Series (Body ported)

Valve model	Type of actuation		Pilot port size	Port size		Flow rate characteristics								Weight (g)
						1 → 4/2 (P → A/B)				4/2 → 5/3 (A/B → EA/EB)				
						C [dm ³ /(s·bar)]	b	Cv	Q [l/min(ANR)]*	C [dm ³ /(s·bar)]	b	Cv	Q [l/min(ANR)]*	
SYA5□20-01□	2 position	Single	M5 x 0.8	1/8	Rc 1/8	1.9	0.35	0.49	499	2.4	0.39	0.61	648	58
		Double				1.7	0.43	0.45	473	1.8	0.35	0.46	473	64
	3 position	Closed centre				1.5	0.44	0.41	420	2.5 [1.5]	0.32 [0.43]	0.59 [0.40]	644 [417]	69
		Exhaust centre Pressure centre				2.2 [0.91]	0.46 [0.58]	0.61 [0.28]	626 [287]	1.8	0.38	0.46	483	
SYA5□20-C4	2 position	Single	M5 x 0.8	1/8	C4 (One-touch fitting for Ø 4)	0.75	0.43	0.20	209	0.85	0.64	0.30	285	82
		Double				0.74	0.40	0.19	201	0.84	0.57	0.28	263	87
	3 position	Closed centre				0.75	0.36	0.19	198	0.84 [0.84]	0.64 [0.53]	0.30 [0.27]	281 [253]	93
		Exhaust centre Pressure centre				0.78 [0.71]	0.44 [0.37]	0.21 [0.18]	219 [189]	0.84	0.57	0.27	263	
SYA5□20-C6	2 position	Single	M5 x 0.8	1/8	C6 (One-touch fitting for Ø 6)	1.5	0.33	0.33	389	2.0	0.37	0.52	533	76
		Double				1.3	0.31	0.33	333	1.6	0.32	0.39	412	82
	3 position	Closed centre				1.3	0.33	0.33	337	1.8 [1.4]	0.35 [0.37]	0.44 [0.35]	473 [373]	87
		Exhaust centre Pressure centre				1.7 [0.80]	0.31 [0.47]	0.42 [0.23]	435 [229]	1.7	0.33	0.44	441	
SYA5□20-C8	2 position	Single	M5 x 0.8	1/8	C8 (One-touch fitting for Ø 8)	1.9	0.21	0.45	458	2.3	0.29	0.57	581	68
		Double				1.6	0.29	0.39	404	1.7	0.38	0.46	456	74
	3 position	Closed centre				1.4	0.38	0.39	375	2.0 [1.5]	0.37 [0.40]	0.52 [0.43]	533 [411]	79
		Exhaust centre Pressure centre				2.2 [1.6]	0.32 [0.44]	0.56 [0.44]	567 [448]	1.8	0.41	0.50	493	

Note) []: denotes normal position.

* These values have been calculated according to ISO6358 and indicate the flow rate under standard conditions with an inlet pressure of 0.6 MPa (relative pressure) and a pressure drop of 0.1 MPa.

Model/SYA5□40 Series (Base mounted)

Valve model	Type of actuation		Pilot port size	Port size		Flow rate characteristics ^{Note 1)}								Weight ^{Note 2)} (g)
						1 → 4/2 (P → A/B)				4/2 → 5/3 (A/B → EA/EB)				
						C [dm ³ /(s·bar)]	b	Cv	Q [l/min(ANR)]*	C [dm ³ /(s·bar)]	b	Cv	Q [l/min(ANR)]*	
SYA5□40-02□	2 position	Single	M5 x 0.8	1/4	1/4	2.4	0.41	0.64	658	2.8	0.29	0.66	707	105 (42)
		Double				1.8	0.47	0.50	516	1.8	0.40	0.47	490	110 (47)
	3 position	Closed centre				1.4	0.55	0.44	430	3.0 [1.2]	0.33 [0.48]	0.72 [0.37]	778 [347]	115 (52)
		Exhaust centre Pressure centre				3.3 [0.84]	0.36 [0.60]	0.85 [0.28]	873 [270]	1.8	0.40	0.48	490	

Note 1) []: denotes the normal position.

Note 2) (): denotes without sub-plate.

* These values have been calculated according to ISO6358 and indicate the flow rate under standard conditions with an inlet pressure of 0.6 MPa (relative pressure) and a pressure drop of 0.1 MPa.

Model/SYA7□20 Series (Body ported)

Valve model	Type of actuation		Pilot port size	Port size		Flow rate characteristics								Weight (g)
						1 → 4/2 (P → A/B)				4/2 → 5/3 (A/B → EA/EB)				
						C [dm ³ /(s·bar)]	b	Cv	Q [l/min(ANR)]*	C [dm ³ /(s·bar)]	b	Cv	Q [l/min(ANR)]*	
SYA7□20-02□	2 position	Single	M5 x 0.8	1/4	P port: 1/4	4.1	0.23	0.93	999	3.3	0.33	0.81	855	132
		Double				2.9	0.31	0.70	742	2.4	0.38	0.63	644	177
	3 position	Closed centre				2.5	0.39	0.65	675	3.4 [2.1]	0.35 [0.38]	0.82 [0.54]	893 [563]	186
		Exhaust centre Pressure centre				4.3 [2.4]	0.23 [0.32]	0.97 [0.61]	1048 [618]	2.2	0.39	0.58	594	
SYA7□20-C8	2 position	Single	M5 x 0.8	1/4	EA, EB port: 1/8	3.2	0.26	0.77	794	3.2	0.37	0.82	852	138
		Double				2.6	0.24	0.63	637	2.4	0.31	0.62	614	183
	3 position	Closed centre				2.4	0.25	0.57	592	2.6 [1.9]	0.42 [0.46]	0.70 [0.56]	718 [541]	192
		Exhaust centre Pressure centre				3.3 [2.4]	0.28 [0.22]	0.78 [0.57]	829 [581]	2.2	0.34	0.60	574	
SYA7□20-C10	2 position	Single	M5 x 0.8	3/8	One-touch fitting for Ø 10	3.8	0.26	0.86	943	3.2	0.34	0.82	835	135
		Double				2.8	0.27	0.67	699	2.4	0.21	0.59	578	180
	3 position	Closed centre				2.5	0.25	0.59	616	2.7 [2.0]	0.38 [0.38]	0.70 [0.56]	724 [536]	189
		Exhaust centre Pressure centre				3.8 [2.4]	0.25 [0.31]	0.89 [0.61]	937 [614]	2.3	0.38	0.61	617	

Note) []: denotes normal position.

* These values have been calculated according to ISO6358 and indicate the flow rate under standard conditions with an inlet pressure of 0.6 MPa (relative pressure) and a pressure drop of 0.1 MPa.

Model/SYA7□40 Series (Base mounted)

Valve model	Type of actuation		Pilot port size	Port size		Flow rate characteristics ^{Note 1)}								Weight ^{Note 2)} (g)
						1 → 4/2 (P → A/B)				4/2 → 5/3 (A/B → EA/EB)				
						C [dm ³ /(s·bar)]	b	Cv	Q [l/min(ANR)]*	C [dm ³ /(s·bar)]	b	Cv	Q [l/min(ANR)]*	
SYA7□40-02□	2 position	Single	M5 x 0.8	1/4	1/4	4.1	0.41	1.1	1123	4.1	0.29	1.0	1036	240 (111)
		Double				3.0	0.43	0.80	834	2.6	0.41	0.72	712	286 (157)
	3 position	Closed centre				2.6	0.42	0.71	718	4.7 [1.7]	0.35 [0.48]	1.1 [0.49]	1235 [492]	294 (165)
		Exhaust centre Pressure centre				5.3 [2.3]	0.39 [0.49]	1.3 [0.65]	1431 [670]	2.2	0.49	0.63	641	
SYA7□40-03	2 position	Single	M5 x 0.8	3/8	3/8	4.9	0.29	1.2	1238	4.5	0.27	1.1	1123	240 (111)
		Double				3.0	0.40	0.80	816	2.6	0.45	0.73	734	286 (157)
	3 position	Closed centre				2.6	0.42	0.71	718	4.8 [1.7]	0.35 [0.48]	1.1 [0.49]	1261 [492]	294 (165)
		Exhaust centre Pressure centre				5.3 [2.3]	0.31 [0.51]	1.3 [0.64]	1356 [682]	2.3	0.45	0.66	649	

Note 1) []: denotes the normal position.

Note 2) (): denotes without sub-plate.

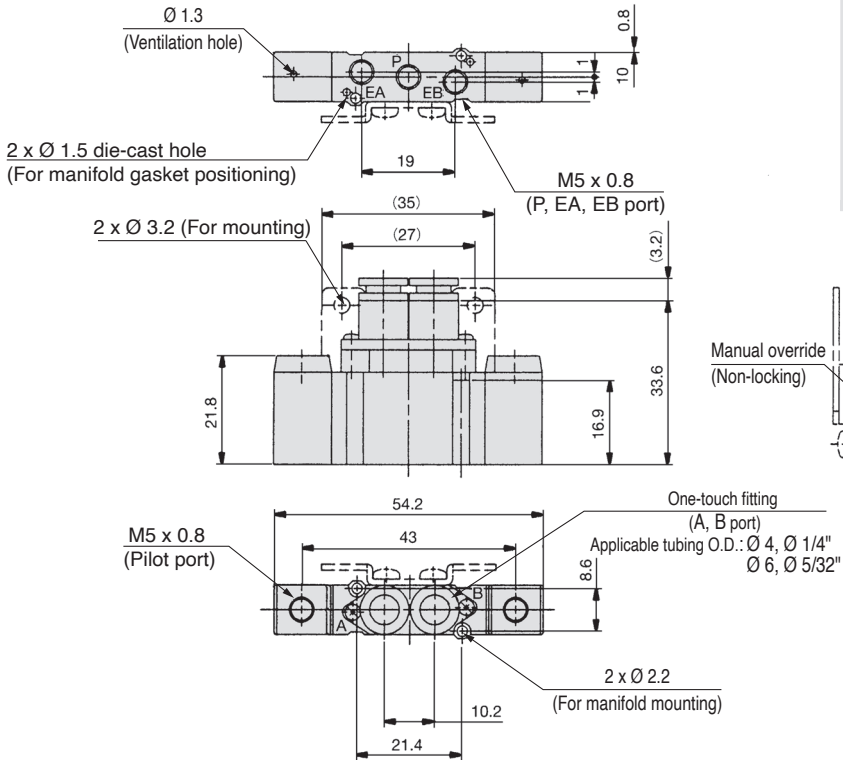
* These values have been calculated according to ISO6358 and indicate the flow rate under standard conditions with an inlet pressure of 0.6 MPa (relative pressure) and a pressure drop of 0.1 MPa.

SYA3000/5000/7000 Series

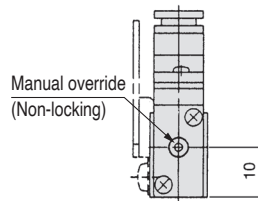
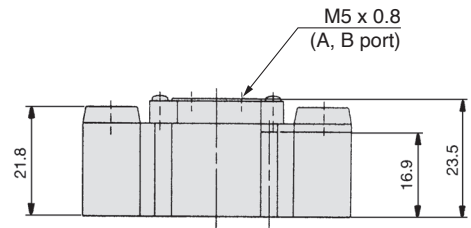
Dimensions/SYA3000 Series: Body Ported

2 position double

SYA3220-C₄, N₃ (-F2)
C₆, N₇

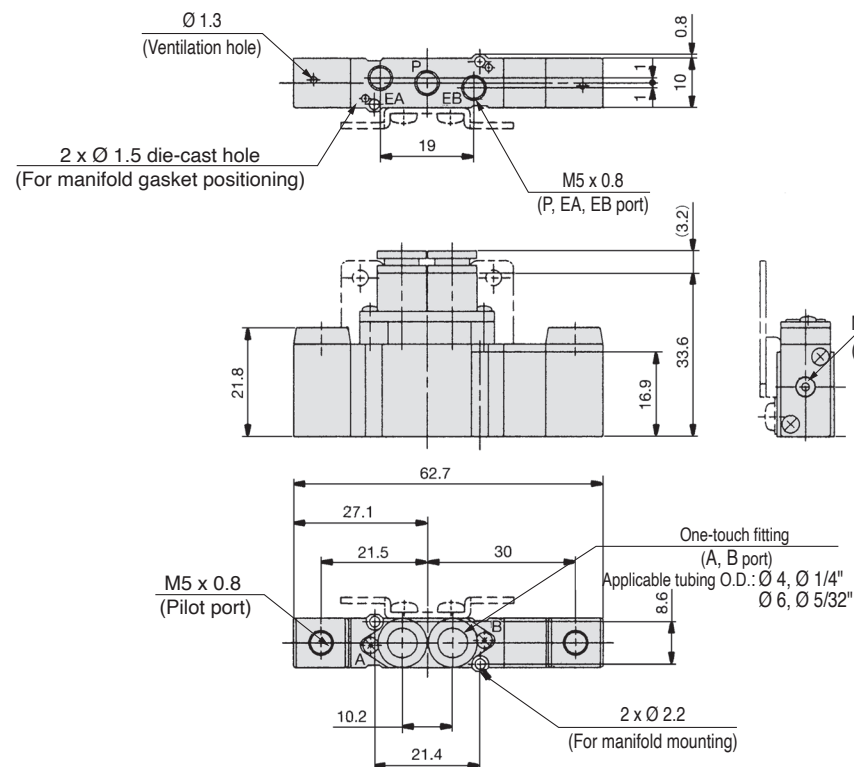


SYA3220-M5

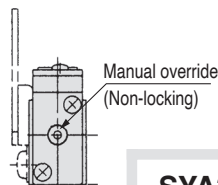
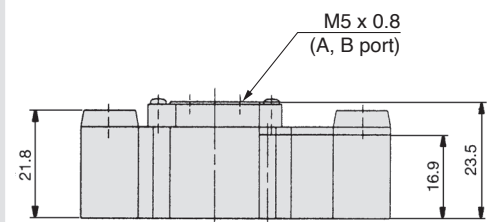


3 position closed centre / exhaust centre / pressure centre

SYA3³/₄20-C₄, N₃ (-F2)
C₆, N₇

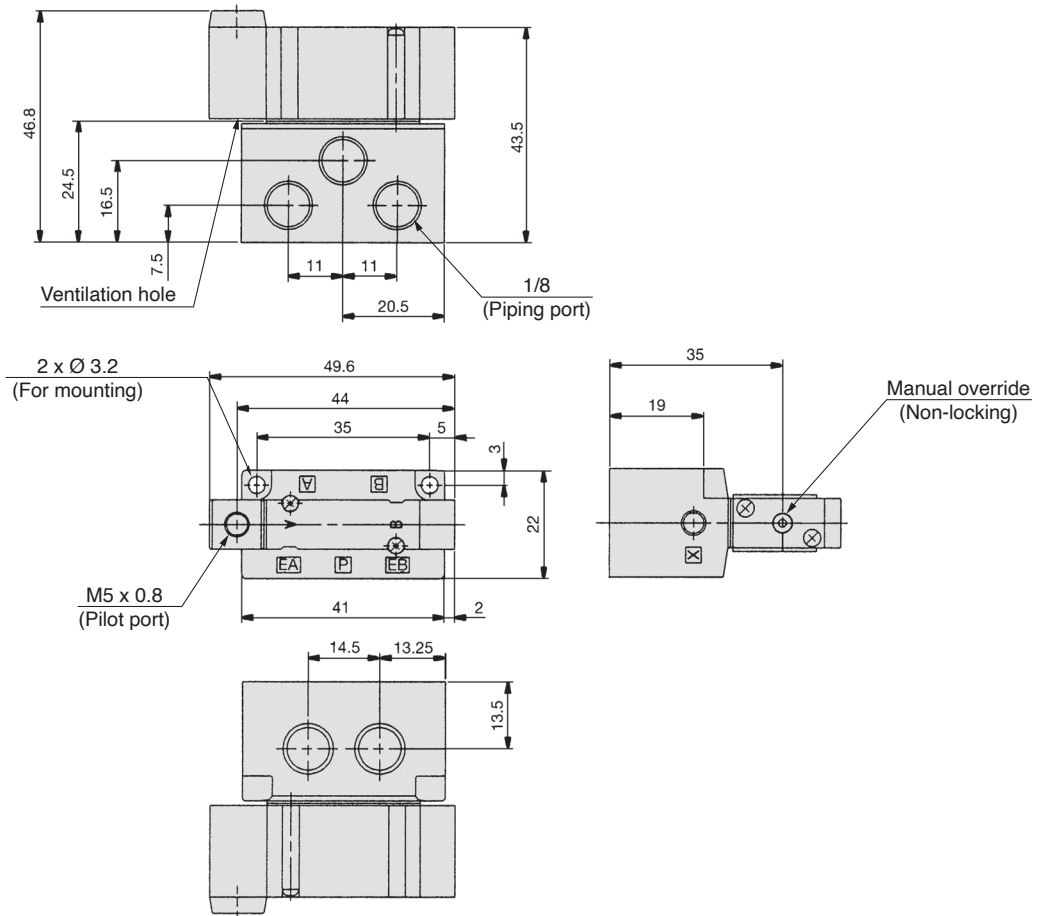


SYA3³/₄20-M5

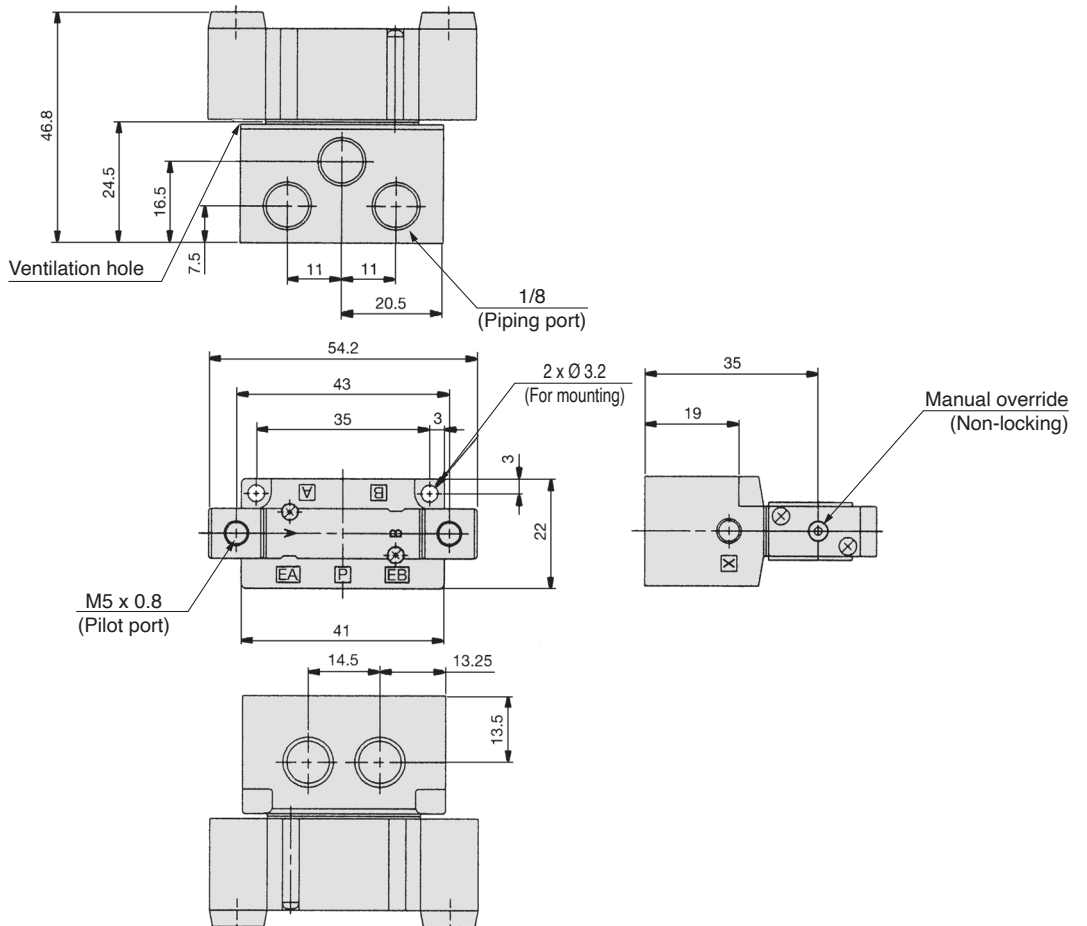


Dimensions/SYA3000 Series: Base Mounted

**2 position single
SYA3140-01□**



**2 position double
SYA3240-01□**

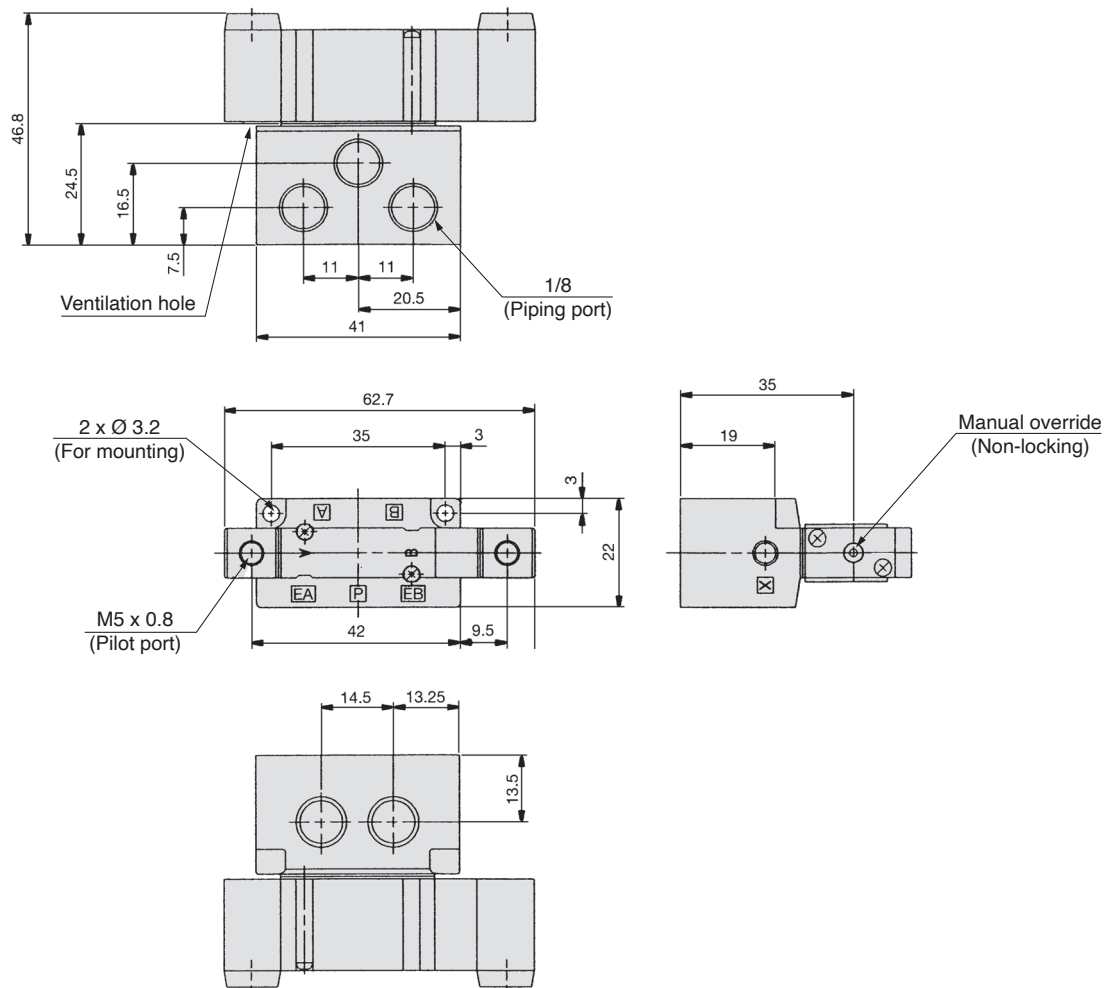


SYA3000/5000/7000 Series

Dimensions/SYA3000 Series: Base Mounted

3 position closed centre / exhaust centre / pressure centre

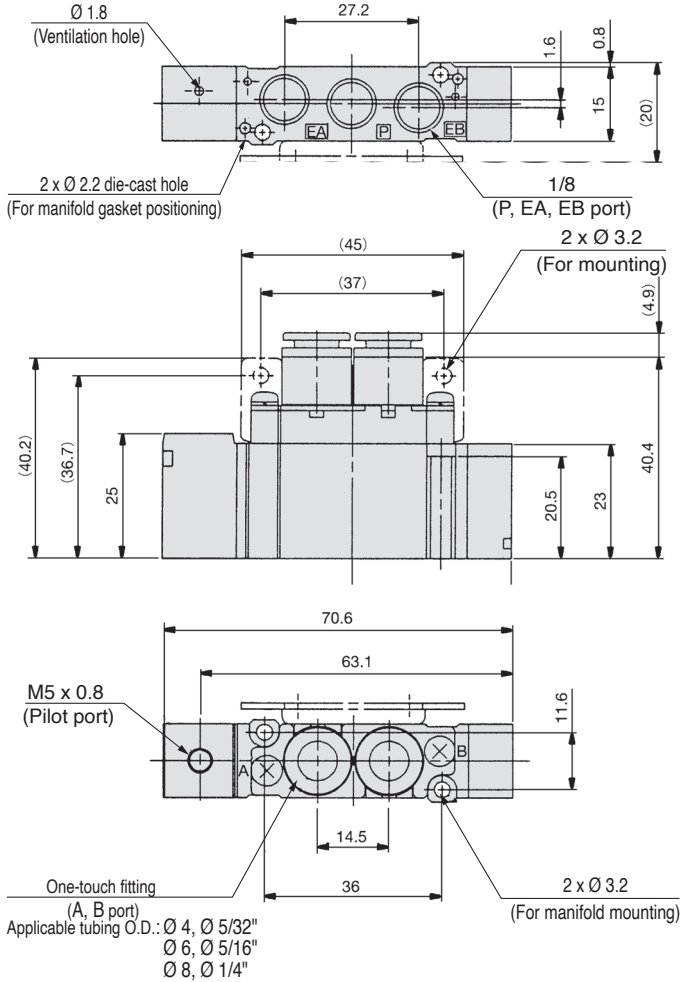
SYA³₅440-01□



Dimensions/SYA5000 Series: Body Ported

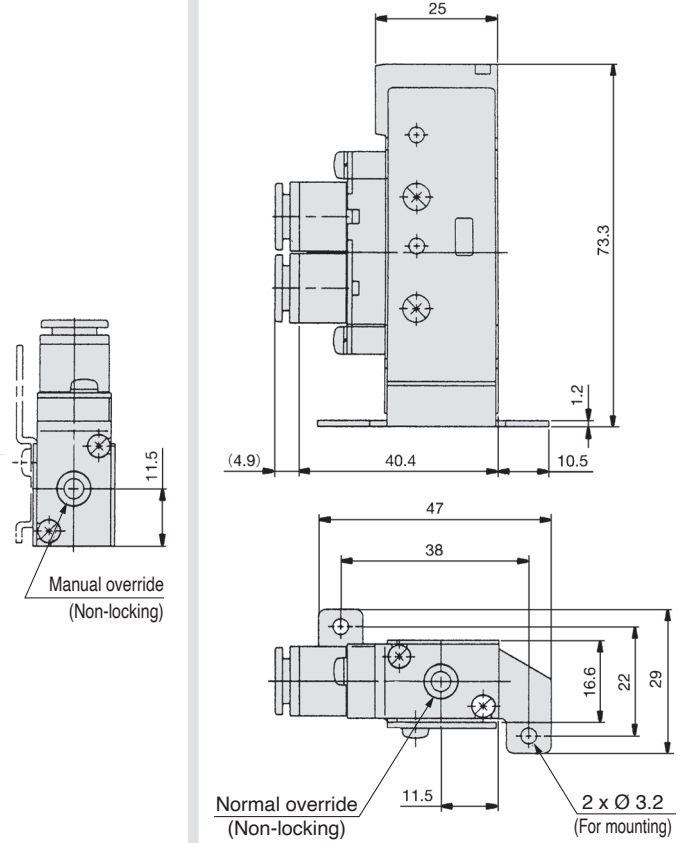
2 position single

**SYA5120-C4, N3
C6, N7 □ (-F2)
C8, N9**

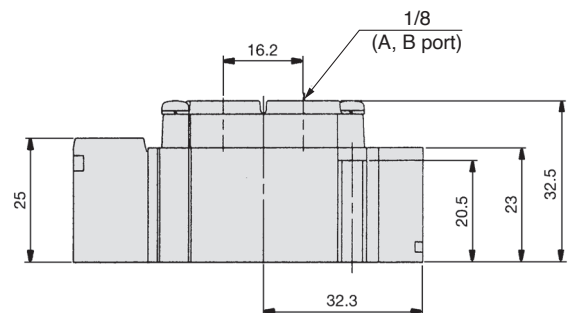


Foot bracket

**SYA5120-C4, N3
C6, N7 □ (-F1)
C8, N9**

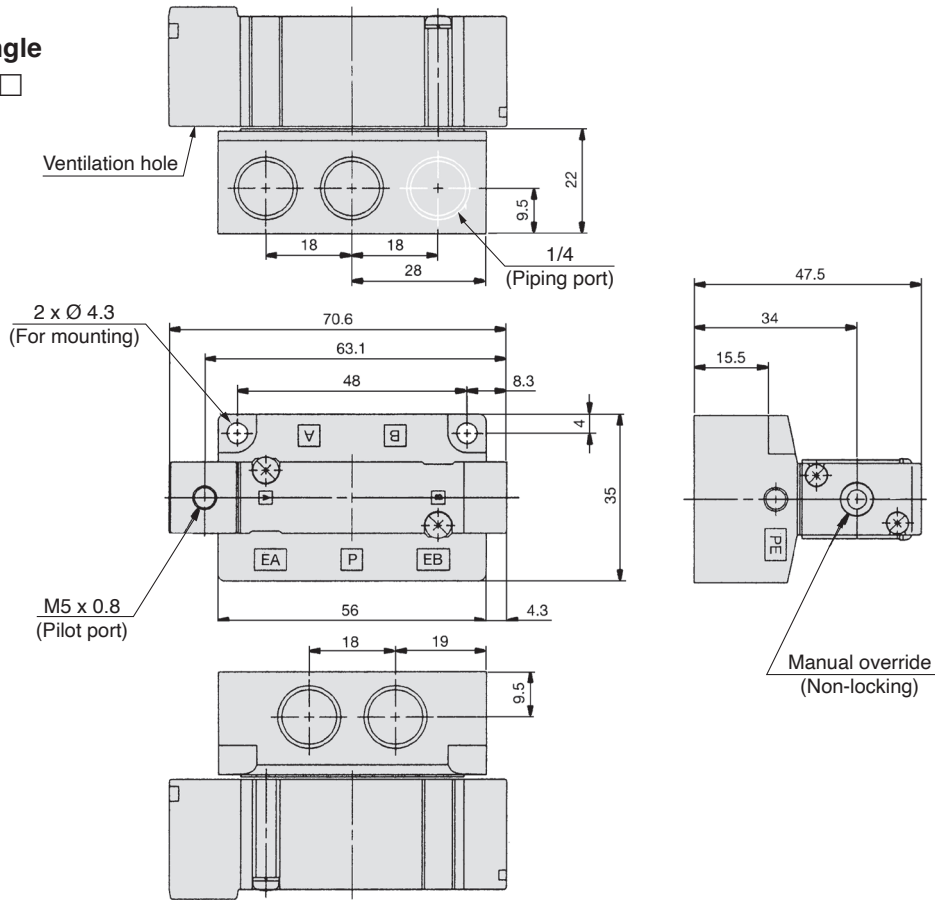


SYA5120-01 □

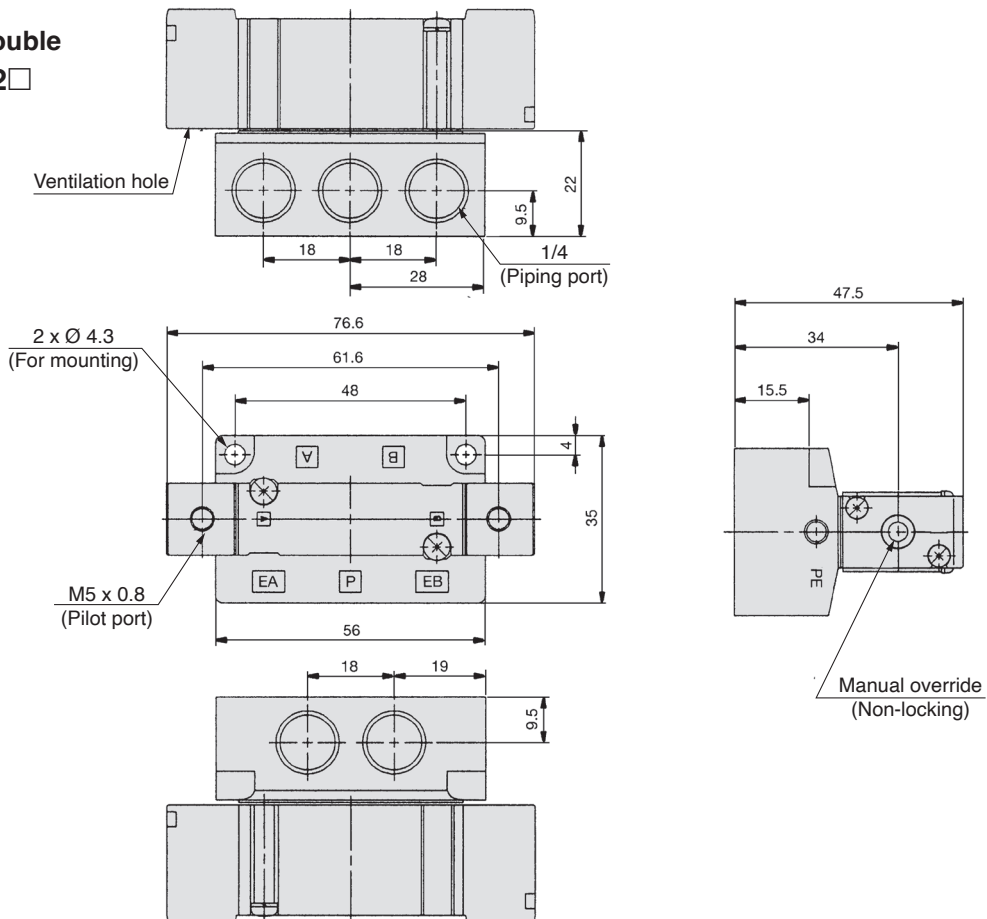


Dimensions/SYA5000 Series: Base Mounted

**2 position single
SYA5140-02□**



**2 position double
SYA5240-02□**

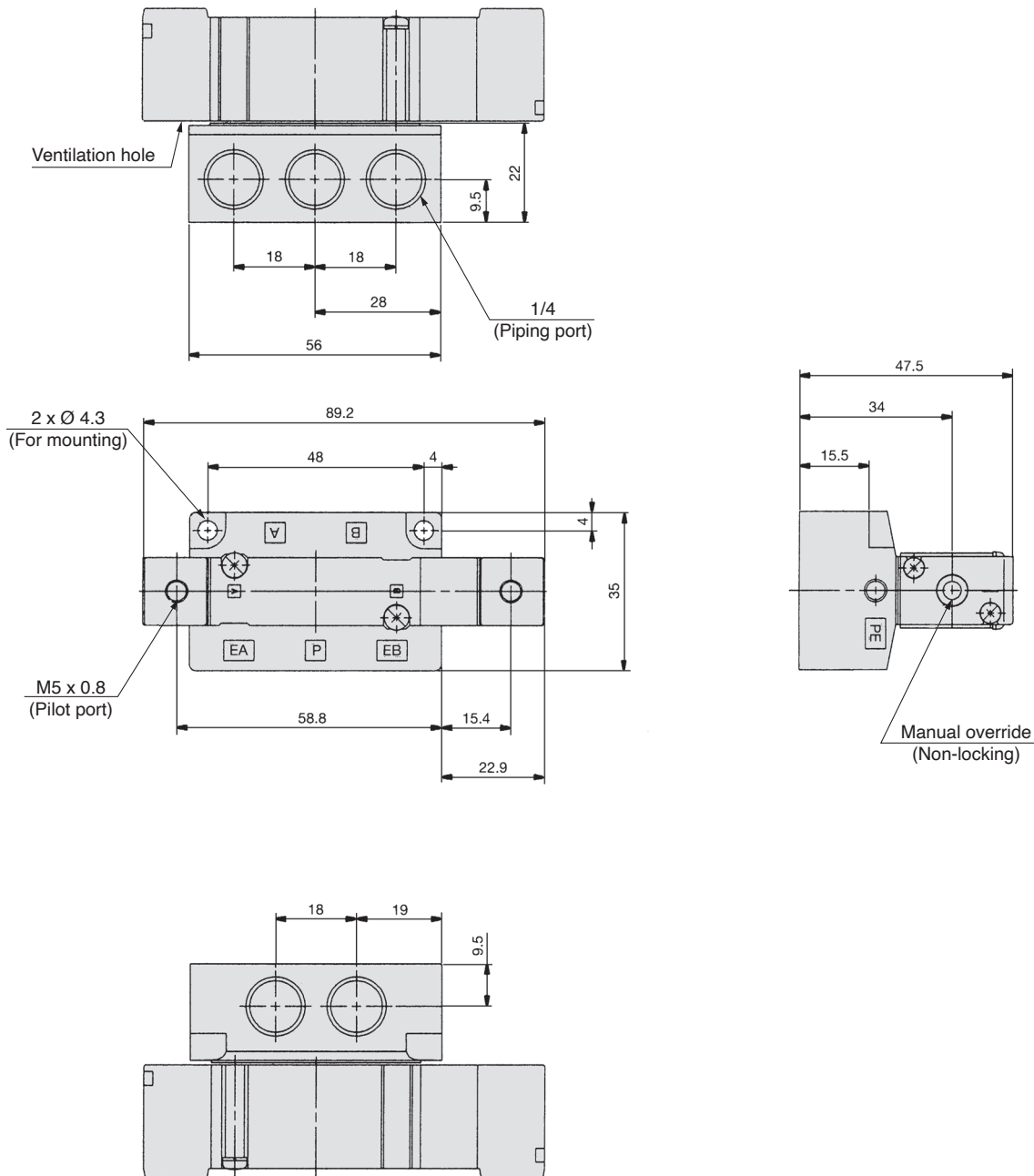


SYA3000/5000/7000 Series

Dimensions/SYA5000 Series: Base Mounted

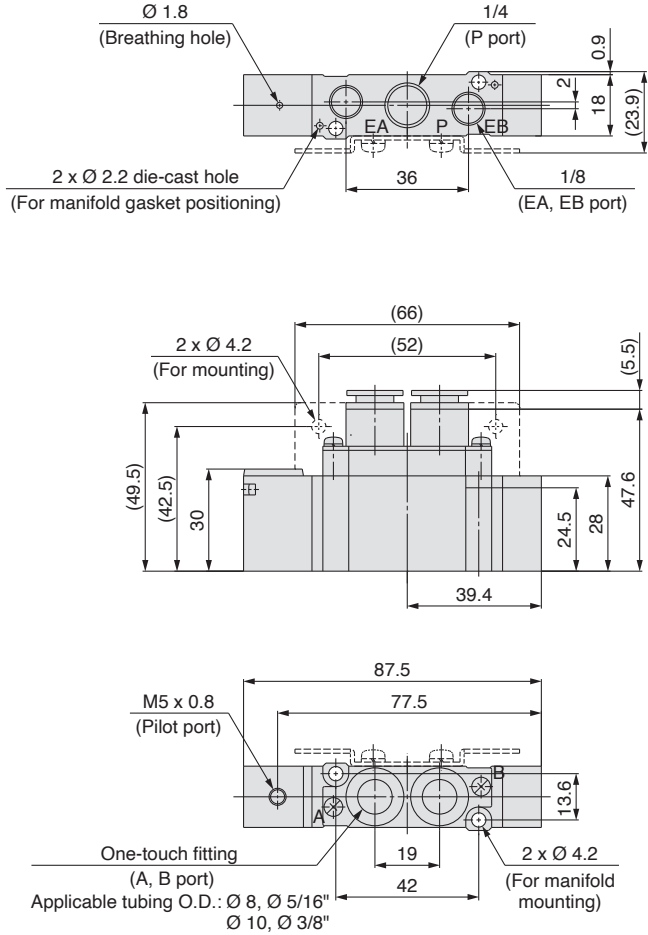
3 position closed centre / exhaust centre / pressure centre

SYA³₅440-02□

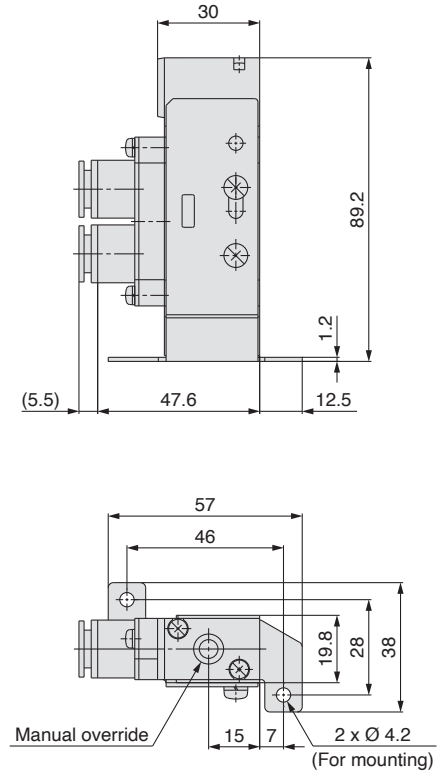


Dimensions/SYA7000 Series: Body Ported

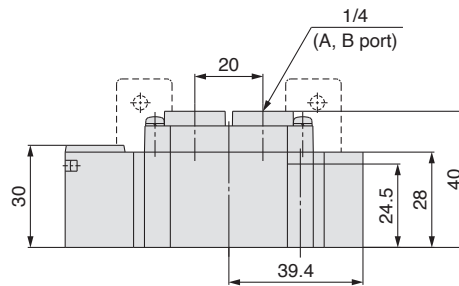
2 position single
SYA7120-C₈, N₉
C₁₀, N₁₁□(-F2)



Foot bracket
SYA7120-C₈, N₉
C₁₀, N₁₁□-F1



SYA7120-02□(-F2)

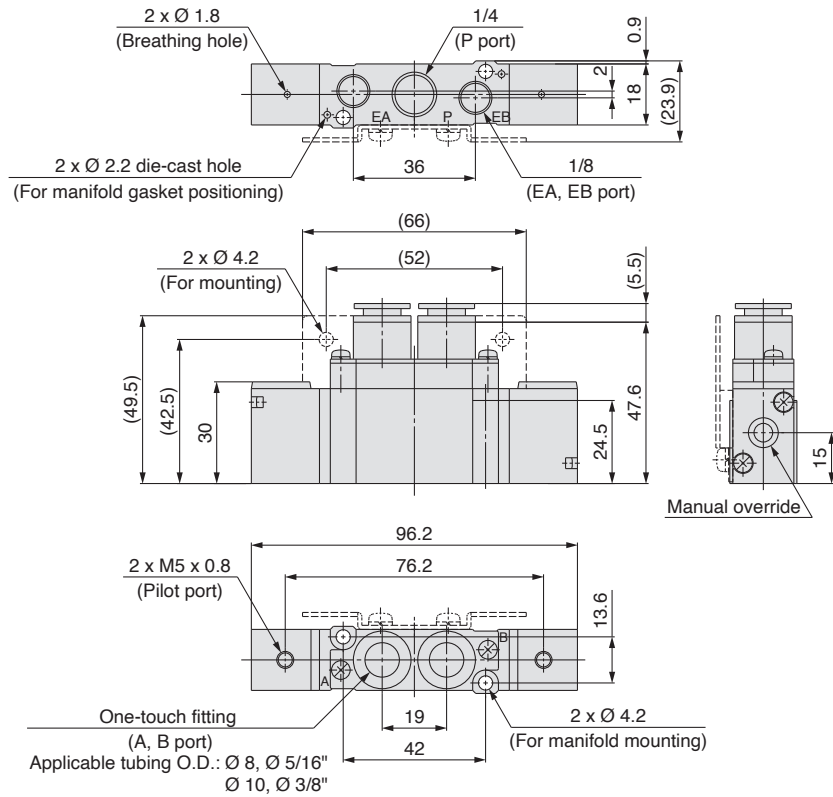


SYA3000/5000/7000 Series

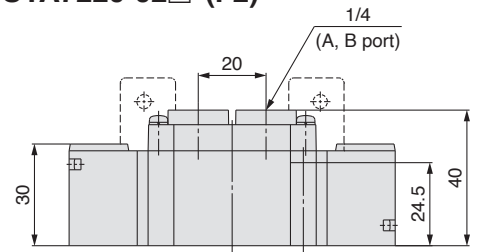
Dimensions/SYA7000 Series: Body Ported

2 position double

SYA7220-C₈, N₉
C₁₀, N₁₁ □-(F2)

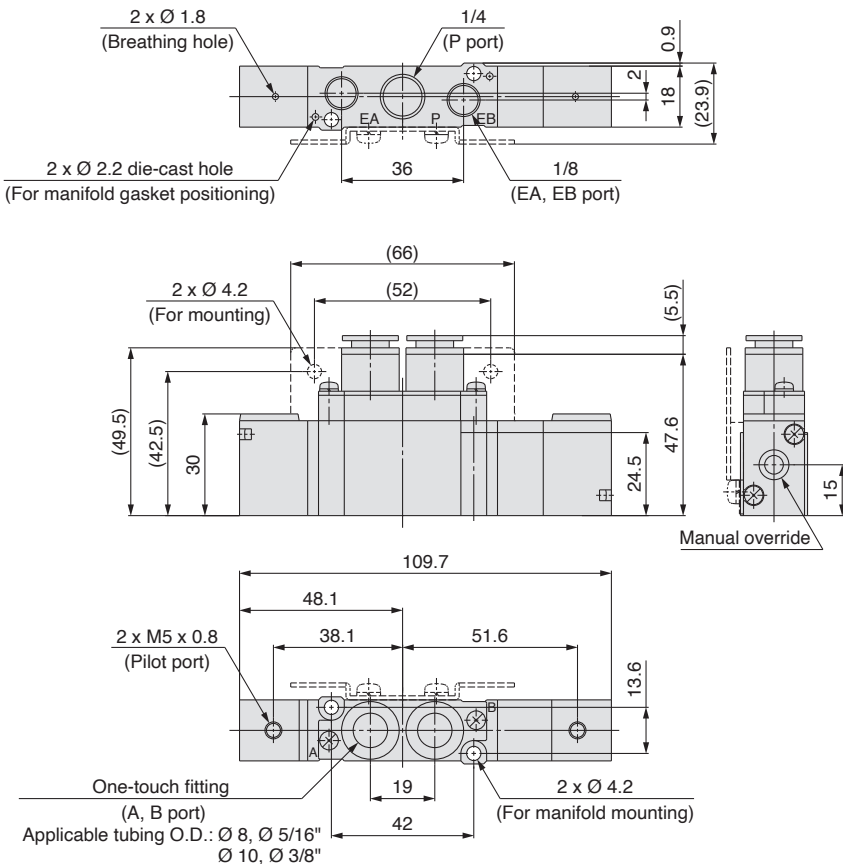


SYA7220-02□-(F2)

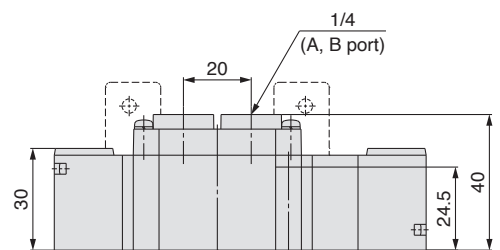


3 position closed centre / exhaust centre / pressure centre

SYA7³₄20-C₈, N₉
C₁₀, N₁₁ □-(F2)



SYA7³₄20-02□-(F2)

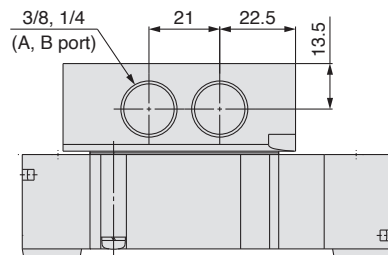
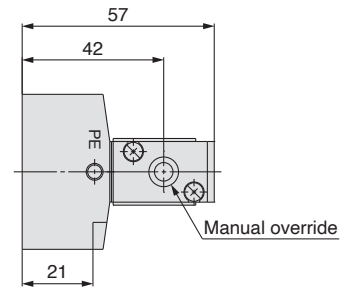
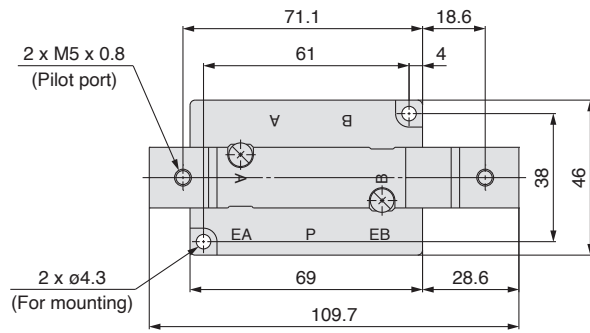
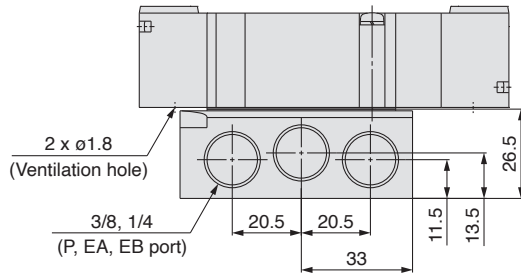


SYA3000/5000/7000 Series

Dimensions/SYA7000 Series: Base Mounted

3 position closed centre / exhaust centre / pressure centre

SYA7³₄40-⁰²₀₃ □



Safety Instructions

These safety instructions are intended to prevent hazardous situations and/or equipment damage. These instructions indicate the level of potential hazard with the labels of “Caution,” “Warning” or “Danger.” They are all important notes for safety and must be followed in addition to International Standards (ISO/IEC) ¹⁾, and other safety regulations.

Danger:

Danger indicates a hazard with a high level of risk which, if not avoided, will result in death or serious injury.

Warning:

Warning indicates a hazard with a medium level of risk which, if not avoided, could result in death or serious injury.

Caution:

Caution indicates a hazard with a low level of risk which, if not avoided, could result in minor or moderate injury.

- 1) ISO 4414: Pneumatic fluid power – General rules and safety requirements for systems and their components.
- ISO 4413: Hydraulic fluid power – General rules and safety requirements for systems and their components.
- IEC 60204-1: Safety of machinery – Electrical equipment of machines. (Part 1: General requirements)
- ISO 10218-1: Robots and robotic devices - Safety requirements for industrial robots - Part 1: Robots.
- etc.

Warning

1. The compatibility of the product is the responsibility of the person who designs the equipment or decides its specifications.

Since the product specified here is used under various operating conditions, its compatibility with specific equipment must be decided by the person who designs the equipment or decides its specifications based on necessary analysis and test results. The expected performance and safety assurance of the equipment will be the responsibility of the person who has determined its compatibility with the product. This person should also continuously review all specifications of the product referring to its latest catalogue information, with a view to giving due consideration to any possibility of equipment failure when configuring the equipment.

2. Only personnel with appropriate training should operate machinery and equipment.

The product specified here may become unsafe if handled incorrectly. The assembly, operation and maintenance of machines or equipment including our products must be performed by an operator who is appropriately trained and experienced.

3. Do not service or attempt to remove product and machinery/equipment until safety is confirmed.

1. The inspection and maintenance of machinery/equipment should only be performed after measures to prevent falling or runaway of the driven objects have been confirmed.
2. When the product is to be removed, confirm that the safety measures as mentioned above are implemented and the power from any appropriate source is cut, and read and understand the specific product precautions of all relevant products carefully.
3. Before machinery/equipment is restarted, take measures to prevent unexpected operation and malfunction.

4. Our products cannot be used beyond their specifications.

Our products are not developed, designed, and manufactured to be used under the following conditions or environments.

Use under such conditions or environments is not covered.

1. Conditions and environments outside of the given specifications, or use outdoors or in a place exposed to direct sunlight.
2. Use for nuclear power, railways, aviation, space equipment, ships, vehicles, military application, equipment affecting human life, body, and property, fuel equipment, entertainment equipment, emergency shut-off circuits, press clutches, brake circuits, safety equipment, etc., and use for applications that do not conform to standard specifications such as catalogues and operation manuals.
3. Use for interlock circuits, except for use with double interlock such as installing a mechanical protection function in case of failure. Please periodically inspect the product to confirm that the product is operating properly.

Caution

We develop, design, and manufacture our products to be used for automatic control equipment, and provide them for peaceful use in manufacturing industries.

Use in non-manufacturing industries is not covered.

Products we manufacture and sell cannot be used for the purpose of transactions or certification specified in the Measurement Act.

The new Measurement Act prohibits use of any unit other than SI units in Japan.

Limited warranty and Disclaimer/Compliance Requirements

The product used is subject to the following “Limited warranty and Disclaimer” and “Compliance Requirements”. Read and accept them before using the product.

Limited warranty and Disclaimer

1. The warranty period of the product is 1 year in service or 1.5 years after the product is delivered, whichever is first. ²⁾ Also, the product may have specified durability, running distance or replacement parts. Please consult your nearest sales branch.
2. For any failure or damage reported within the warranty period which is clearly our responsibility, a replacement product or necessary parts will be provided. This limited warranty applies only to our product independently, and not to any other damage incurred due to the failure of the product.
3. Prior to using SMC products, please read and understand the warranty terms and disclaimers noted in the specified catalogue for the particular products.
- 2) Vacuum pads are excluded from this 1 year warranty. A vacuum pad is a consumable part, so it is warranted for a year after it is delivered. Also, even within the warranty period, the wear of a product due to the use of the vacuum pad or failure due to the deterioration of rubber material are not covered by the limited warranty.

Compliance Requirements

1. The use of SMC products with production equipment for the manufacture of weapons of mass destruction (WMD) or any other weapon is strictly prohibited.
2. The exports of SMC products or technology from one country to another are governed by the relevant security laws and regulations of the countries involved in the transaction. Prior to the shipment of a SMC product to another country, assure that all local rules governing that export are known and followed.

Safety Instructions

Be sure to read “Handling Precautions for SMC Products” (M-E03-3) before using.

SMC Corporation (Europe)

Austria	+43 (0)2262622800	www.smc.at	office@smc.at
Belgium	+32 (0)33551464	www.smc.be	info@smc.be
Bulgaria	+359 (0)2807670	www.smc.bg	office@smc.bg
Croatia	+385 (0)13707288	www.smc.hr	office@smc.hr
Czech Republic	+420 541424611	www.smc.cz	office@smc.cz
Denmark	+45 70252900	www.smc.dk.com	smc@smcdk.com
Estonia	+372 651 0370	www.smcee.ee	info@smcee.ee
Finland	+358 207513513	www.smc.fi	smcffi@smc.fi
France	+33 (0)164761000	www.smc-france.fr	supportclient@smc-france.fr
Germany	+49 (0)61034020	www.smc.de	info@smc.de
Greece	+30 210 2717265	www.smchellas.gr	sales@smchellas.gr
Hungary	+36 23513000	www.smc.hu	office@smc.hu
Ireland	+353 (0)14039000	www.smcautomation.ie	sales@smcautomation.ie
Italy	+39 03990691	www.smcitalia.it	mailbox@smcitalia.it
Latvia	+371 67817700	www.smc.lv	info@smc.lv

Lithuania	+370 5 2308118	www.smclt.lt	info@smclt.lt
Netherlands	+31 (0)205318888	www.smc.nl	info@smc.nl
Norway	+47 67129020	www.smc-norge.no	post@smc-norge.no
Poland	+48 222119600	www.smc.pl	sales@smc.pl
Portugal	+351 214724500	www.smc.eu	apoioclientept@smc.smces.es
Romania	+40 213205111	www.smcromania.ro	smcromania@smcromania.ro
Russia	+7 (812)3036600	www.smc.eu	sales@smcru.com
Slovakia	+421 (0)413213212	www.smc.sk	office@smc.sk
Slovenia	+386 (0)73885412	www.smc.si	office@smc.si
Spain	+34 945184100	www.smc.eu	post@smc.smces.es
Sweden	+46 (0)86031240	www.smc.nu	smc@smc.nu
Switzerland	+41 (0)523963131	www.smc.ch	helpcenter.ch@smc.com
Turkey	+90 212 489 0 440	www.smcturkey.com.tr	info@smcturkey.com.tr
UK	+44 (0)845 121 5122	www.smc.uk	sales@smc.uk

South Africa +27 10 900 1233 www.smcza.co.za zasales@smcza.co.za